



OVERVIEW

Series 810 is an ultra slim Luminaire with a 26mm depth for easy use in low void space. The fitting is IP65, Fire rated and complies with Part C (moisture), Part E (acoustic) & Part L (energy) of Building Regulations, approved for use in homes utilising new construction methods for floor, joist and ceiling combination such as Metal-Web or I-Joists. The optic lens achieves the traditional aesthetic of a dichroic lamp with a clear light beam and gentle cut-off at the extremities for excellent lux level uniformity.

FEATURES

- Part L1 & L2 compliance: Part B, C, E
- Fire rated for 30, 60 & 90 minute ceilings
- Compliant Solid timber & I-Joist building
- Speed fit, tool free loop in & out terminals.
- Twist and lock bezel options available as accessories.
- IP65 front / IP20 back, Bathroom Zone 1 & zone 2

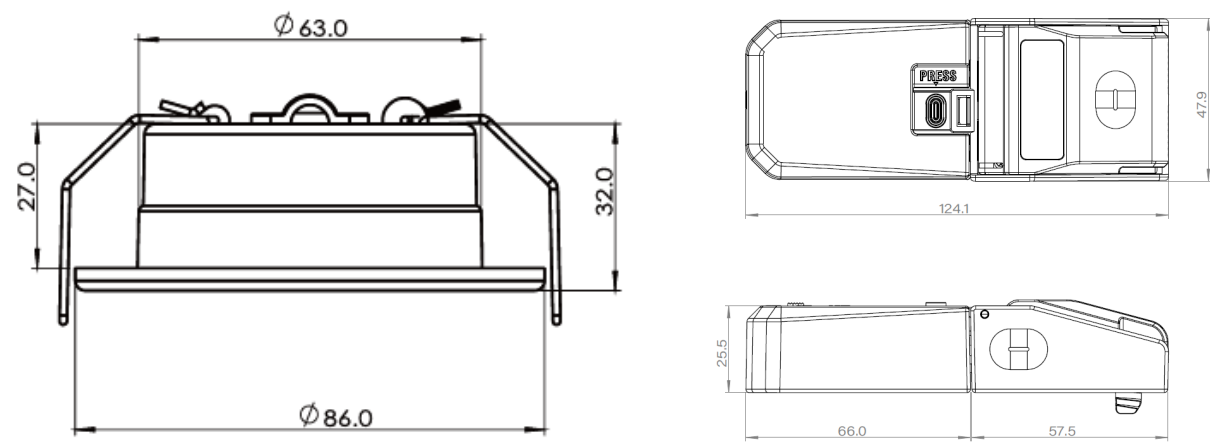
OPTIONS

- Colour temperature 2700K, 3000K, 4000K & 5000K
- Black, Brushed & Chrome Bezels

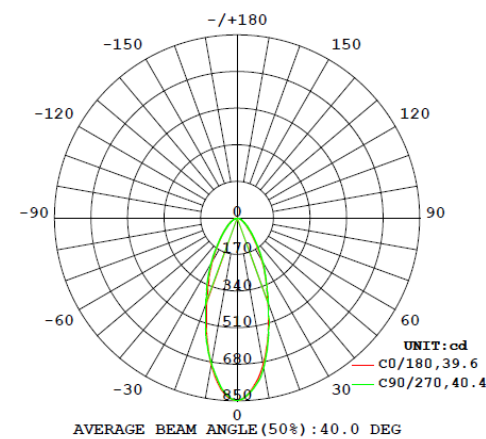
SERIES 810

Downlights

PRODUCT DIMENSIONS



PHOTOMETRIC



T: 01282 476600 | E: info@photonighting.co.uk

Unit 1 Boran Court, Network 65, Hapton, Burnley BB11 5TH

www.photonighting.co.uk

SERIES 810

Downlights

PRODUCT SPECIFICATION

810 - 60 - (CCT)

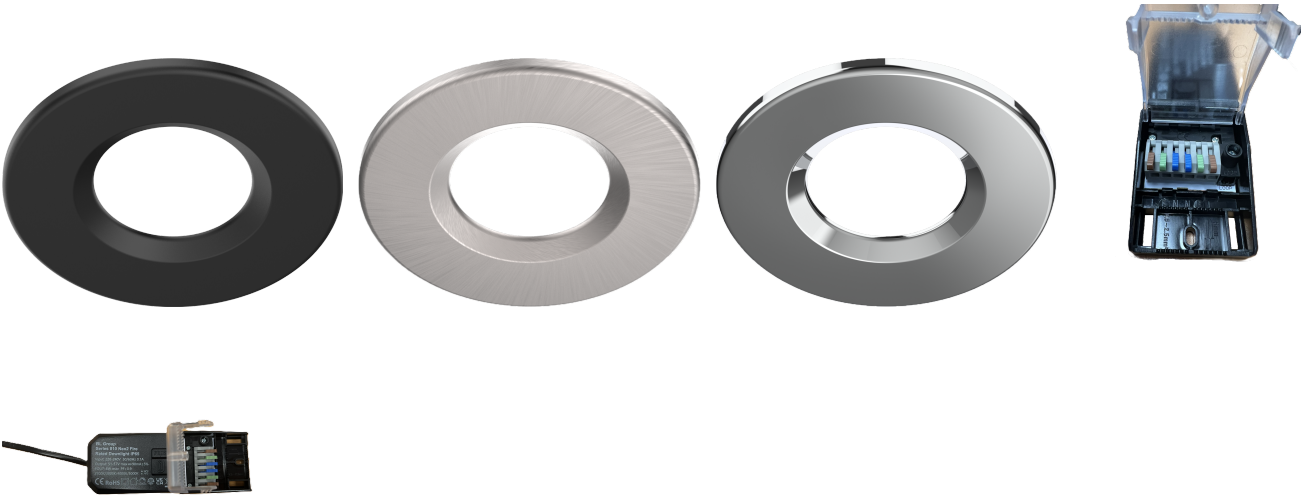
Lumen Output (LM)	
Code	Description
60	600lm output

Correlated Colour Temp (CCT)	
Code	Description
827	2700K
830	3000K
840	4000K
850	5000K

ACCESSORIES

Bezel Colour (CLR)	
Code	Description
810-BZ-BL	Black Bezel
810-BZ-BS	Brushed Steel Bezel
810-BZ-PC	Polished Steel Bezel

ACCESSORIES



T: 01282 476600 | E: info@photonicleighting.co.uk

Unit 1 Boran Court, Network 65, Hapton, Burnley BB11 5TH

www.photonicleighting.co.uk