

# SERIES 391

## Trackspot

**PHOTONIC.**  
LIGHTING SOLUTIONS



### OVERVIEW

Series 391 is a stylish track spot available in 2 lumen outputs with 2 manually adjustable beam angle choices. Series 391 also fits on standard 3 circuit track, with the options of also DALI dimming or Casambi Dimming. Head is adjustable to aim at any direction required, tilting through 90° and rotatable through 355°, complete with a low glare TIR optic which can be manually adjusted to focus the beam exactly where it is required. Ideally for environments when the subject changes, such as retail, art or museum spaces. This is a made to order product.

### FEATURES

- Stylish low profile Track spot
- Head can pivot 90° and rotate through 355°
- Low glare TIR optic with tuneable beam for controlled performance.

### OPTIONS

- 2700K, 3000K or 4000K options
- 2 manual adjustable optic choices
- 2 Luminaire colour choices
- Choice of Control options



T: 01282 476600 | E: [info@photonighting.co.uk](mailto:info@photonighting.co.uk)

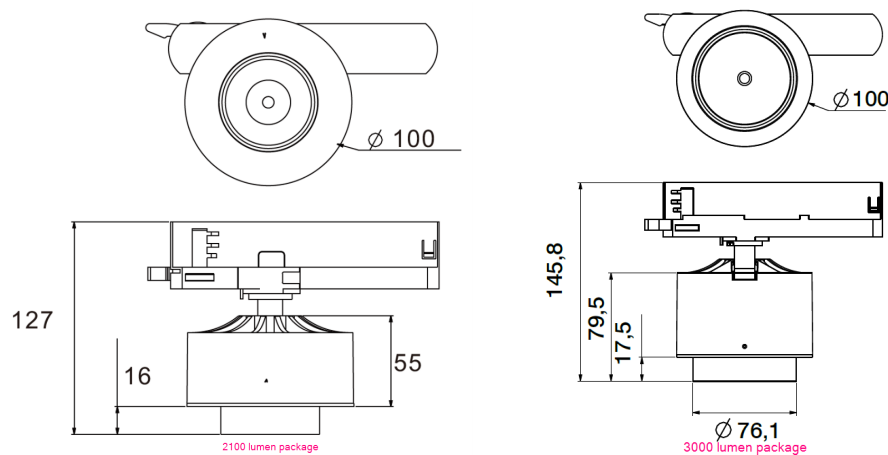
Unit 1 Boran Court, Network 65, Hapton, Burnley BB11 5TH

[www.photonighting.co.uk](http://www.photonighting.co.uk)

# SERIES 391

## Trackspot

### PRODUCT DIMENSIONS



### PHOTOMETRIC

### PRODUCT SPECIFICATION

391 - (LM) - (CCT) - (OP) - (CTR) - (CR)

Lumen Output (LM)		Correlated Colour Temperature (CCT)		Beam angle (OP)	
Code	Description	Code	Description	Code	Description
21	2100lm (20W)	827	80CRI 2700K	15-36	15°-36° (available in 2100lm only)
30	3000lm (26W)	830	80CRI 3000K	36-60	36°-60° (available in 2100lm only)
		840	80CRI 4000K	20-40	20°-40° (available in 3000lm only)
				40-60	40°-60° (available in 3000lm only)

Control (CTR)		Colour (CR)	
Code	Description	Code	Description
N	Non-dim	WH	White
D	DALI	BK	Black
BC	Bluetooth Casambi		

### OPTIONS



T: 01282 476600 | E: [info@photonighting.co.uk](mailto:info@photonighting.co.uk)

Unit 1 Boran Court, Network 65, Hapton, Burnley BB11 5TH

[www.photonighting.co.uk](http://www.photonighting.co.uk)