

SERIES 501

Emergency



OVERVIEW

Series 501 is an intelligent compact emergency pin spot. Series 501 is ICEL endorsed and ENEC certified offering full compliance to current standards. The unit can be supplied in self-test or manual test with the latest LiFePO4 battery technology, providing a 8 year warranty on the product.

FEATURES

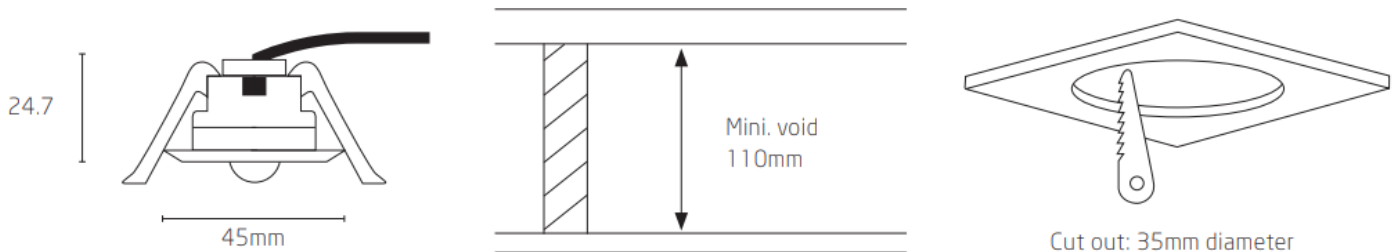
- 8 year warranty
- ICEL & ENEC certified

OPTIONS

- Open area lens
- Corridor lens
- Self-test or manual test.



PRODUCT DIMENSIONS



T: 01282 476600 | E: info@photoniclighting.co.uk

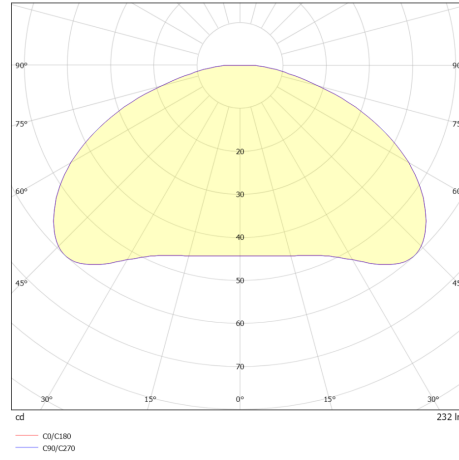
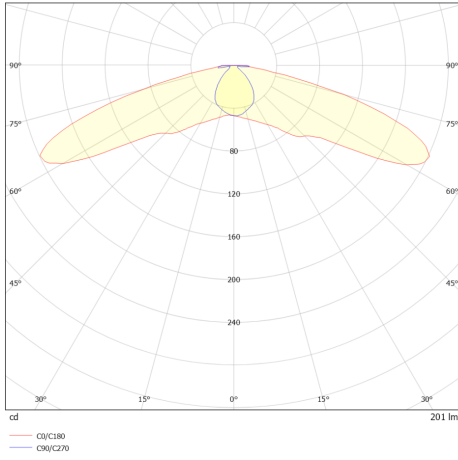
Unit 1 Boran Court, Network 65, Hapton, Burnley BB11 5TH

www.photoniclighting.co.uk

SERIES 501

Emergency

PHOTOMETRIC



PRODUCT SPECIFICATION

501 - (LM) - (FN) - (OP)

lumen output (LM)	
Code	Description
220	220lm

Emergency Function (FN)	
Code	Description
NM	Non-Maintained
SL	Self test 1W

Lens option (OP)	
Code	Description
C	Corridor Lens
O	Open lens

OPTIONS



T: 01282 476600 | E: info@photoniclighing.co.uk

Unit 1 Boran Court, Network 65, Hapton, Burnley BB11 5TH

www.photoniclighing.co.uk